
KINGS LANGLEY ESTATES

S A L E S & L E T T I N G S

ARCHWAY HOUSE, 4 ORPHANGE WAY, WATFORD, WD17 1PG

WWW.KINGSLANGLEYESTATES.CO.UK

Kings Langley are pleased to offer this spacious second floor apartment which is situated in a gated development within walking distance to Watford Junction and local amenities. The accommodation comprises: Entrance hallway, two double bedrooms, three piece bathroom suite and an open plan living room / kitchen. The property comes with allocated parking.

Viewings come strongly advised by an appointment only basis.

360 Tour:

<https://view.ricoh360.com/03afc5a7-faa3-4901-b75b-8fc89d894fe3>

Video:

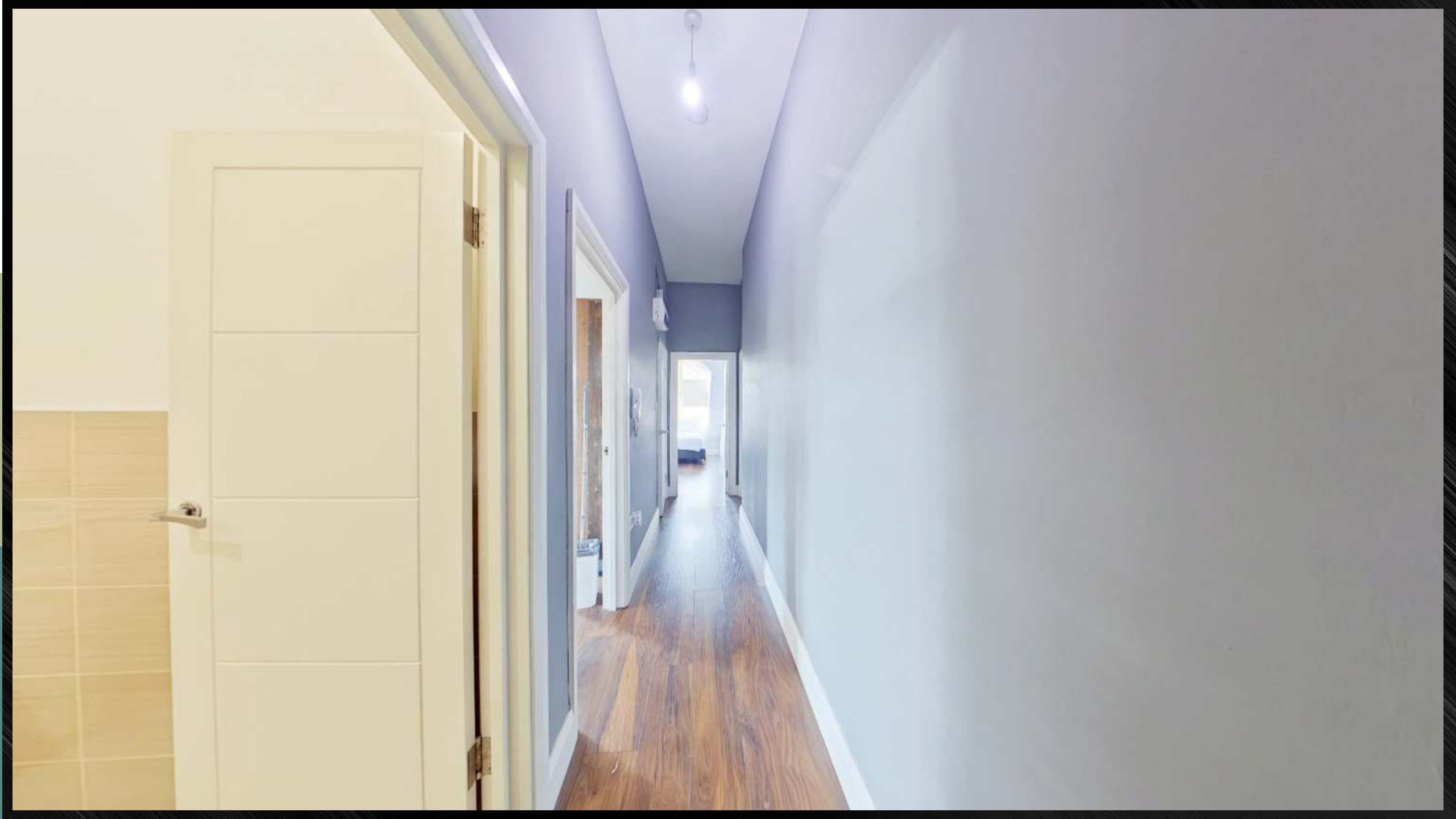
<https://vimeo.com/1086079065?share=copy#t=0>

KINGS LANGLEY
ESTATES
SALES & LETTINGS

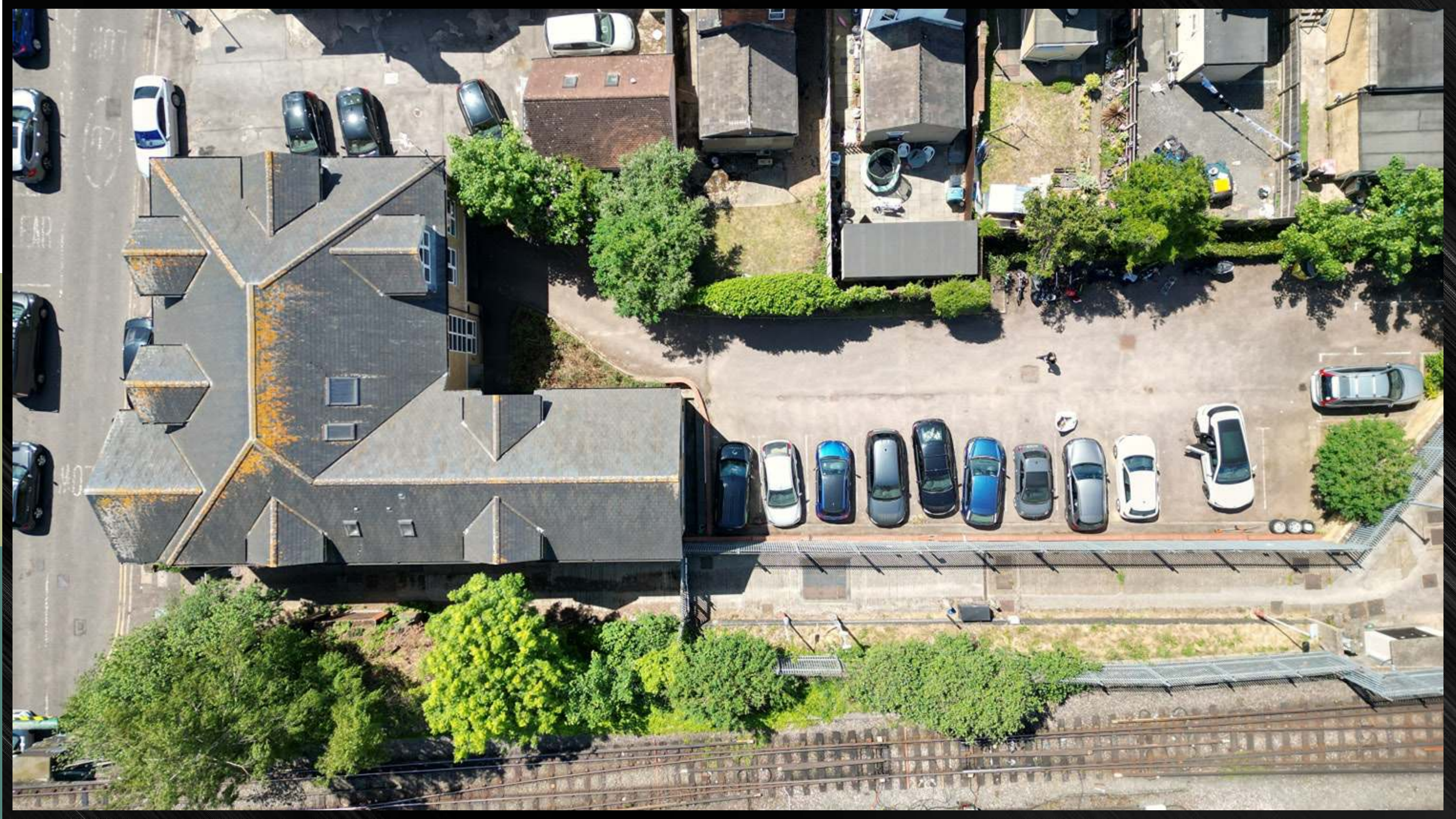


LET BY
0800 123 4567

NO PARKING
24 Hour
Access Required











“My company was established in the Village in 2019. From the hard work & founding principles then - and both aspects have very much remained true to today - we quickly grew to become an award winning company in the local area. Our record in consistently handling the selling & Letting of properties brought to the market has been particularly impressive with a consistency demonstrable track record.”

D Freeman
DAVID FREEMAN
DIRECTOR



WATFORD BOROUGH COUNCIL - COUNCIL TAX BAND D

EPC - C RATING

VIEWINGS BY AN APPOINTMENT ONLY

PRICE UPON APPLICATION



Kings House Business Centre, Home Park Estate, Station Road, Kings Langley, WD4 8LZ

Tel: 01923 947373

kingslangleyestates.co.uk

Kings Langley Estates wishes to inform prospective buyers and tenants that these particulars are a guide and act as information only. All our details are given in good faith and believed to be correct at the time of printing but they don't form part of an offer or contract. No employee of the company has authority to make or give and representation or warranty in relation to this property. All fixtures and fittings, whether fitted or not are deemed removable by the vendor unless stated otherwise and room sizes are measured between internal wall surfaces, including furnishings.