



Merchant Square East, London, Greater London, W2 1AN

# Merchant Square East, London, Greater London, W2 1AN

## £9,533 PCM



### Description:

This four bedroom penthouse is situated on the fifteenth floor of this prestigious building which features a concierge service, lift service, and secure underground parking. The stunning apartment comprises spacious living and entertaining space with a beautiful reception room, a large terrace offering breath taking views over London, a superb modern fitted open plan kitchen, four bedrooms, three bathrooms and ample storage space. The apartment offers easy access to superb transport links such as Paddington Train Station (Bakerloo, Hammersmith & City, Circle, District lines and Heathrow) Edgware Road (Circle, District and Bakerloo lines).

- 15th floor penthouse
- Four bedrooms
- Three bathrooms
- Large terrace
- Available now

Additional Information: City Of Westminster

Location: Within easy access to local amenities.

### Viewings:

By appointment only, via Kings Langley Estates - Call 01923 947373

*"With over 28 years experience within the property industry I have a wealth of knowledge in delivering exemplary and unsurpassed discretionary customer service to all clientele"*



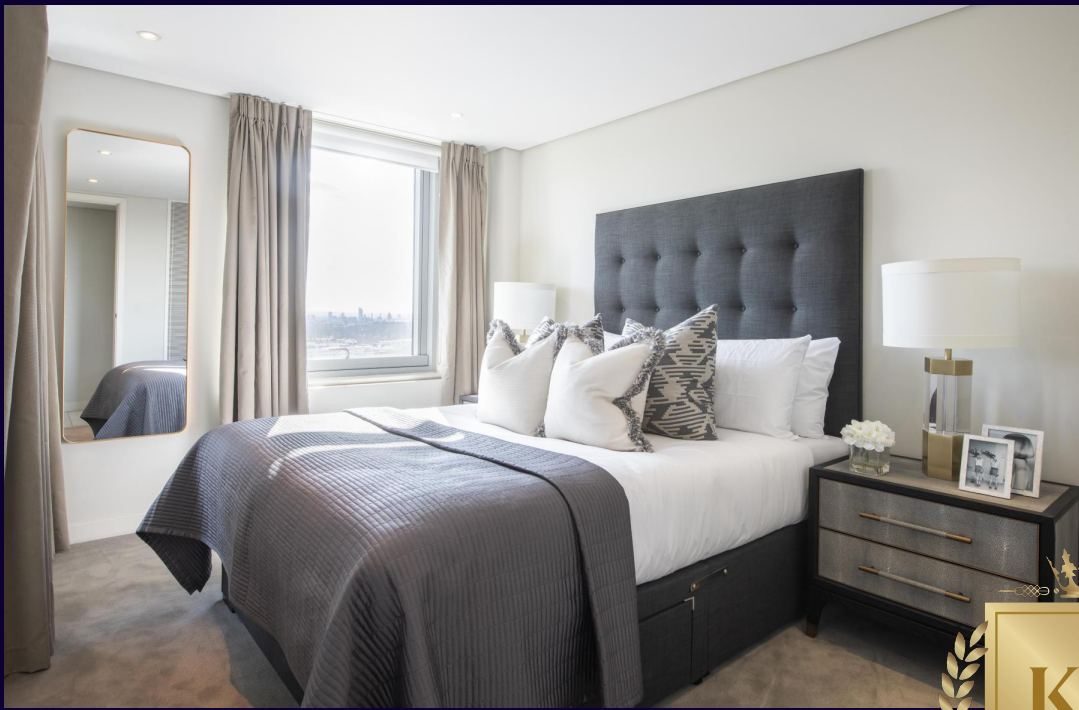
David Freeman  
Director











Kings Langley Estates wishes to inform prospective buyers and tenants that these particulars are a guide and act as information only. All our details are given in good faith and believed to be correct at the time of printing but they don't form part of an offer or contract. No employee of the company has authority to make or give a representation or warranty in relation to this property. All fixtures and fittings, whether fitted or not are deemed removable by the vendor unless stated otherwise and room sizes are measured between internal wall surfaces, including furnishings.



Residential Sales, Lettings and Acquisitions for private clientele